

Modular Cooking Range Line EVO900 Base Cupboard 1/4 Module with Bottle Drawer

ITEM # _____

MODEL # _____

NAME # _____

SIS # _____

AIA # _____


391152 (E9BANB000E)

 Base cupboard with drawer
for bottles, 1/4 module

Short Form Specification

Item No. _____

To be installed below other EVO900 top units in island type installations with operations from one side. Body and internal structure of unit entirely in stainless steel. Drawer for bottles. Delivered with 50 mm height adjustable feet.

Main Features

- Unit can be easily installed below other 900 line top models.
- Unit delivered with 50 mm height adjustable feet in Stainless steel.
- Base compartment for storage of pots, pans, sheet pans, etc.
- Doors with handles, drawers, heating kits and runners for GN containers can be ordered separately.

Construction

- Constructed in Stainless steel with Scotch Brite finish to meet the highest hygiene standards.

Optional Accessories

- | | | |
|--|------------|--------------------------|
| • 4 wheels, 2 swivelling with brake (EVO700/900). It is mandatory to install with base supports for feet/wheels. | PNC 206135 | <input type="checkbox"/> |
| • Flanged feet kit | PNC 206136 | <input type="checkbox"/> |
| • Frontal kicking strip for concrete installation, 200 mm | PNC 206146 | <input type="checkbox"/> |
| • Frontal kicking strip for concrete installation, 400 mm | PNC 206147 | <input type="checkbox"/> |
| • Frontal kicking strip for concrete installation, 800 mm | PNC 206148 | <input type="checkbox"/> |
| • Frontal kicking strip for concrete installation, 1000 mm | PNC 206150 | <input type="checkbox"/> |
| • Frontal kicking strip for concrete installation, 1200 mm | PNC 206151 | <input type="checkbox"/> |
| • Frontal kicking strip for concrete installation, 1600 mm | PNC 206152 | <input type="checkbox"/> |
| • 2 SIDE KICKING STRIPS-CONCRETE INST-900 | PNC 206157 | <input type="checkbox"/> |
| • Frontal kicking strip, 200 mm | PNC 206174 | <input type="checkbox"/> |
| • Frontal kicking strip, 400 mm | PNC 206175 | <input type="checkbox"/> |
| • Frontal kicking strip, 800 mm | PNC 206176 | <input type="checkbox"/> |
| • Frontal kicking strip, 1000 mm | PNC 206177 | <input type="checkbox"/> |
| • Frontal kicking strip, 1200 mm | PNC 206178 | <input type="checkbox"/> |
| • Frontal kicking strip, 1600 mm | PNC 206179 | <input type="checkbox"/> |
| • Pair of side kicking strips | PNC 206180 | <input type="checkbox"/> |
| • 4 feet for concrete installation (not for 900 line freestanding grill) | PNC 206210 | <input type="checkbox"/> |
| • 2 side covering panels, height 700 mm, depth 900 mm | PNC 206335 | <input type="checkbox"/> |
| • Base support for feet or wheels - 400mm (EVO700/900) | PNC 206366 | <input type="checkbox"/> |
| • Base support for feet or wheels - 800mm (EVO700/900) | PNC 206367 | <input type="checkbox"/> |
| • Base support for feet or wheels - 1200mm (EVO700/EVO900) | PNC 206368 | <input type="checkbox"/> |
| • Base support for feet or wheels - 1600mm (EVO700/900) | PNC 206369 | <input type="checkbox"/> |
| • Base support for feet or wheels - 2000mm (EVO700/900) | PNC 206370 | <input type="checkbox"/> |

APPROVAL: _____



Modular Cooking Range Line EVO900 Base Cupboard 1/4 Module with Bottle Drawer

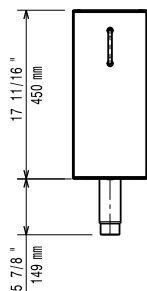
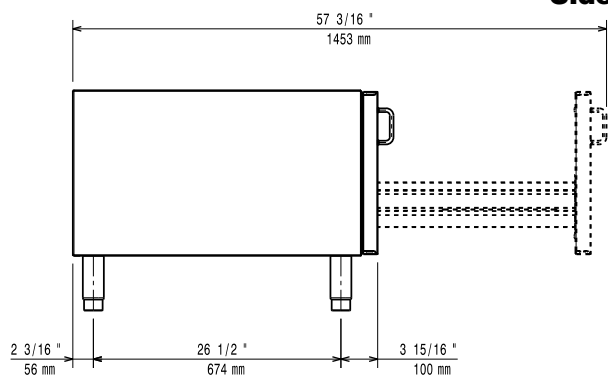
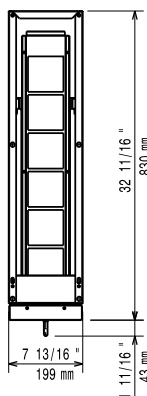
- | | | |
|--|------------|--------------------------|
| • Rear paneling - 600mm (EVO700/900) | PNC 206373 | <input type="checkbox"/> |
| • Rear paneling - 800mm (EVO700/900) | PNC 206374 | <input type="checkbox"/> |
| • Rear paneling - 1000mm (EVO700/900) | PNC 206375 | <input type="checkbox"/> |
| • Rear paneling - 1200mm (EVO700/900) | PNC 206376 | <input type="checkbox"/> |
| • Base support for feet/wheels (600mm) | PNC 206431 | <input type="checkbox"/> |



**Modular Cooking Range Line
EVO900 Base Cupboard 1/4 Module with Bottle Drawer**

The company reserves the right to make modifications to the products without prior notice. All information correct at time of printing.

2025.12.20

Front

Side

Top

Key Information:

External dimensions, Width:

391152 (E9BANB000E) 200 mm

External dimensions, Depth:

900 mm

External dimensions, Height:

600 mm

Net weight:

14 kg